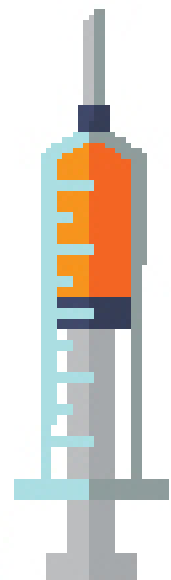


PCMH Quality of Care Indicators

IMMUNIZATIONS



% of patients (turning the age of 2) who were fully immunized

0%

GOAL: 64%

% of patients (turning the age of 13) who received Tdap, HPV, and meningococcal

0%

GOAL: 50%

% of patients (18 and over) who were immunized with Tdap vaccine in the last 10 years

44.26%

GOAL: 50%

CHRONIC DISEASE MANAGEMENT

% of patients ages 18-75, w/DM dx, whose HbA1c < 9% at the time of the last reading in the last year

74.77%

GOAL: 59%

% of patients ages 18-75 w/DM who received a retinal eye exam in the last 1 year

11.80%

GOAL: 68%

% of pts ages 18-75 w/DM who received a foot exam in the last 1 year

30.49%

GOAL: 85%

67.87%

GOAL: 90%

86.44%

GOAL: 81%

% of patients ages 18-75 w/DM who received nephropathy screening or monitoring test done during the last 1 year

% of patients ages 18-85 w/HTN whose last blood pressure (BP) is <140/90 in the last 1 year

PREVENTATIVE CARE



% of women ages 50-74 who received one or more mammograms in the last 2 years

51.43%

GOAL 52%

% of women ages 21-64 who received one or more pap tests to screen for cervical cancer in the last 3 years or women age 30-64 with pap/HPV co testing last 5 years

55.61%

GOAL 48%

% of patients who received one or more screenings for colorectal cancer

41.08%

GOAL 50%

% of patients ages 18+ who were screened for tobacco use and who got tobacco cessation intervention if identified as a tobacco user since Jan 1st

98.51%

GOAL 99%

% of patients ages 18+ who had a BMI taken and if BMI was outside normal parameters received a follow-up plan since Jan 1st

96.81%

GOAL 75%

% patients ages 12 and older who were screened for depression and if positive, had a follow-up plan documented since Jan 1st

61.24%

GOAL 75%

% of patients who received a preventative exam in the last 1 year

14.85%

GOAL 50%

% of patients ages 3-6 who had a well child in the last 1 year

73.53%

GOAL 90%

VULNERABLE - ELDERLY



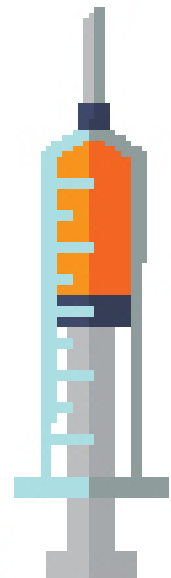
% of patients ages 85-120 whose last blood pressure (BP) is <150/90 in the last 1 year

56.67%

GOAL 81%

PCMH Quality of Care Indicators

IMMUNIZATIONS



% of patients (turning the age of 2) who were fully immunized

2.31%

GOAL: 64%

% of patients (turning the age of 13) who received Tdap, HPV, and meningococcal

7.18%

GOAL: 50%

% of patients (18 and over) who were immunized with Tdap vaccine in the last 10 years

54.97%

GOAL: 50%

CHRONIC DISEASE MANAGEMENT

% of patients ages 18-75, w/DM dx, whose HbA1c < 9% at the time of the last reading in the last year

58.84%

GOAL: 59%

% of patients ages 18-75 w/DM who received a retinal eye exam in the last 1 year

24.40%

GOAL: 68%

% of pts ages 18-75 w/DM who received a foot exam in the last 1 year

32.75%

GOAL: 85%

69.40%

GOAL: 90%

78.09%

GOAL: 81%

% of patients ages 18-75 w/DM who received nephropathy screening or monitoring test done during the last 1 year

% of patients ages 18-85 w/HTN whose last blood pressure (BP) is <140/90 in the last 1 year

PREVENTATIVE CARE



% of women ages 50-74 who received one or more mammograms in the last 2 years

56.02%

GOAL 52%

% of women ages 21-64 who received one or more pap tests to screen for cervical cancer in the last 3 years or women age 30-64 with pap/HPV co testing last 5 years

46.84%

GOAL 48%

% of patients who received one or more screenings for colorectal cancer

33.86%

GOAL 50%

% of patients ages 18+ who were screened for tobacco use and who got tobacco cessation intervention if identified as a tobacco user since Jan 1st

95.41%

GOAL 99%

% of patients ages 18+ who had a BMI taken and if BMI was outside normal parameters received a follow-up plan since Jan 1st

73.62%

GOAL 75%

% patients ages 12 and older who were screened for depression and if positive, had a follow-up plan documented since Jan 1st

27.65%

GOAL 75%

% of patients who received a preventative exam in the last 1 year

18.02%

GOAL 50%

% of patients ages 3-6 who had a well child in the last 1 year

74.97%

GOAL 90%

VULNERABLE - ELDERLY



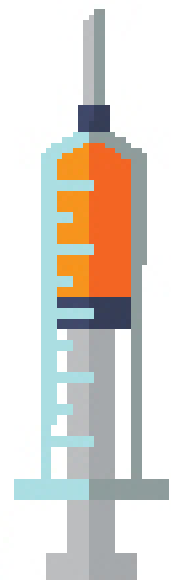
% of patients ages 85-120 whose last blood pressure (BP) is <150/90 in the last 1 year

71.26%

GOAL 81%

PCMH Quality of Care Indicators

IMMUNIZATIONS



% of patients (turning the age of 2) who were fully immunized

24%

GOAL: 64%

% of patients (turning the age of 13) who received Tdap, HPV, and meningococcal

6.67%

GOAL: 50%

% of patients (18 and over) who were immunized with Tdap vaccine in the last 10 years

62.11%

GOAL: 50%

CHRONIC DISEASE MANAGEMENT

% of patients ages 18-75, w/DM dx, whose HbA1c < 9% at the time of the last reading in the last year

52.50%

GOAL: 59%

% of patients ages 18-75 w/DM who received a retinal eye exam in the last 1 year

14.57%

GOAL: 68%

% of pts ages 18-75 w/DM who received a foot exam in the last 1 year

20.53%

GOAL: 85%

52.32%

GOAL: 90%

74.48%

GOAL: 81%

% of patients ages 18-75 w/DM who received nephropathy screening or monitoring test done during the last 1 year

% of patients ages 18-85 w/HTN whose last blood pressure (BP) is <140/90 in the last 1 year

PREVENTATIVE CARE



% of women ages 50-74 who received one or more mammograms in the last 2 years

49.41%

GOAL 52%

% of women ages 21-64 who received one or more pap tests to screen for cervical cancer in the last 3 years or women age 30-64 with pap/HPV co testing last 5 years

60.4%

GOAL 48%

% of patients who received one or more screenings for colorectal cancer

28.49%

GOAL 50%

% of patients ages 18+ who were screened for tobacco use and who got tobacco cessation intervention if identified as a tobacco user since Jan 1st

98.72%

GOAL 99%

% of patients ages 18+ who had a BMI taken and if BMI was outside normal parameters received a follow-up plan since Jan 1st

74.86%

GOAL 75%

% patients ages 12 and older who were screened for depression and if positive, had a follow-up plan documented since Jan 1st

33.11%

GOAL 75%

% of patients who received a preventative exam in the last 1 year

26.72%

GOAL 50%

% of patients ages 3-6 who had a well child in the last 1 year

74.84%

GOAL 90%

VULNERABLE - ELDERLY



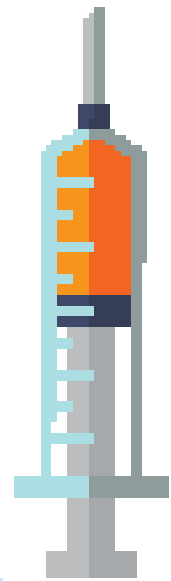
% of patients ages 85-120 whose last blood pressure (BP) is <150/90 in the last 1 year

67.86%

GOAL 81%

PCMH Quality of Care Indicators

IMMUNIZATIONS



% of patients (turning the age of 2) who were fully immunized

27.04%

GOAL: 64%

% of patients (turning the age of 13) who received Tdap, HPV, and meningococcal

4.65%

GOAL: 50%

% of patients (18 and over) who were immunized with Tdap vaccine in the last 10 years

42.78%

GOAL: 50%

CHRONIC DISEASE MANAGEMENT

% of patients ages 18-75, w/DM dx, whose HbA1c < 9% at the time of the last reading in the last year

6.25%

GOAL: 59%

16.67%

GOAL: 90%

58.97%

GOAL: 81%

% of patients ages 18-75 w/DM who received nephropathy screening or monitoring test done during the last 1 year

% of patients ages 18-85 w/HTN whose last blood pressure (BP) is <140/90 in the last 1 year

PREVENTATIVE CARE



% of women ages 50-74 who received one or more mammograms in the last 2 years

64.34%

GOAL 52%

% of women ages 21-64 who received one or more pap tests to screen for cervical cancer in the last 3 years or women age 30-64 with pap/HPV co testing last 5 years

58.72%

GOAL 48%

% of patients who received one or more screenings for colorectal cancer

0.75%

GOAL 50%

% of patients ages 18+ who were screened for tobacco use and who got tobacco cessation intervention if identified as a tobacco user since Jan 1st

97.83%

GOAL 99%

% of patients ages 18+ who had a BMI taken and if BMI was outside normal parameters received a follow-up plan since Jan 1st

62.77%

GOAL 75%

% patients ages 12 and older who were screened for depression and if positive, had a follow-up plan documented since Jan 1st

49.58%

GOAL 75%

% of patients who received a preventative exam in the last 1 year

10%

GOAL 50%

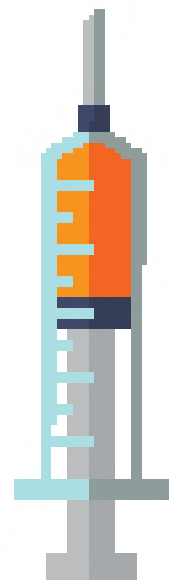
% of patients ages 3-6 who had a well child in the last 1 year

86.45%

GOAL 90%

PCMH Quality of Care Indicators

IMMUNIZATIONS



% of patients (turning the age of 2) who were fully immunized

8.99%

GOAL: 64%

% of patients (turning the age of 13) who received Tdap, HPV, and meningococcal

20%

GOAL: 50%

% of patients (18 and over) who were immunized with Tdap vaccine in the last 10 years

66.29%

GOAL: 50%

CHRONIC DISEASE MANAGEMENT

% of patients ages 18-75, w/DM dx, whose HbA1c < 9% at the time of the last reading in the last year

60.28%

GOAL: 59%

% of patients ages 18-75 w/DM who received a retinal eye exam in the last 1 year

19.60%

GOAL: 68%

% of pts ages 18-75 w/DM who received a foot exam in the last 1 year

31.44%

GOAL: 85%

63.68%

GOAL: 90%

79.16%

GOAL: 81%

% of patients ages 18-75 w/DM who received nephropathy screening or monitoring test done during the last 1 year

% of patients ages 18-85 w/HTN whose last blood pressure (BP) is <140/90 in the last 1 year

PREVENTATIVE CARE



% of women ages 50-74 who received one or more mammograms in the last 2 years

65.73%

GOAL 52%

% of women ages 21-64 who received one or more pap tests to screen for cervical cancer in the last 3 years or women age 30-64 with pap/HPV co testing last 5 years

58.96%

GOAL 48%

% of patients who received one or more screenings for colorectal cancer

38.76%

GOAL 50%

% of patients ages 18+ who were screened for tobacco use and who got tobacco cessation intervention if identified as a tobacco user since Jan 1st

98.05%

GOAL 99%

% of patients ages 18+ who had a BMI taken and if BMI was outside normal parameters received a follow-up plan since Jan 1st

72.5%

GOAL 75%

% patients ages 12 and older who were screened for depression and if positive, had a follow-up plan documented since Jan 1st

56.3%

GOAL 75%

% of patients who received a preventative exam in the last 1 year

12.61%

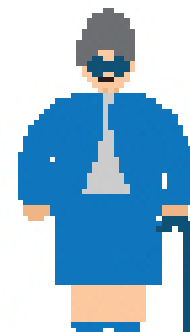
GOAL 50%

% of patients ages 3-6 who had a well child in the last 1 year

87.76%

GOAL 90%

VULNERABLE - ELDERLY



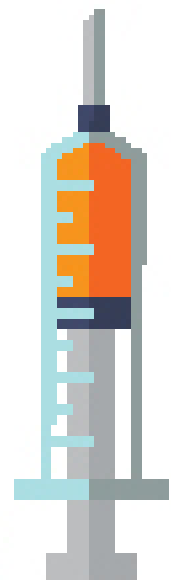
% of patients ages 85-120 whose last blood pressure (BP) is <150/90 in the last 1 year

80.68%

GOAL 81%

PCMH Quality of Care Indicators

IMMUNIZATIONS



% of patients (turning the age of 2) who were fully immunized

1.11%

GOAL: 64%

% of patients (turning the age of 13) who received Tdap, HPV, and meningococcal

4.26%

GOAL: 50%

% of patients (18 and over) who were immunized with Tdap vaccine in the last 10 years

59.57%

GOAL: 50%

CHRONIC DISEASE MANAGEMENT

% of patients ages 18-75, w/DM dx, whose HbA1c < 9% at the time of the last reading in the last year

61.43%

GOAL: 59%

% of patients ages 18-75 w/DM who received a retinal eye exam in the last 1 year

35.34%

GOAL: 68%

% of pts ages 18-75 w/DM who received a foot exam in the last 1 year

57.17%

GOAL: 85%

72.35%

GOAL: 90%

77.47%

GOAL: 81%

% of patients ages 18-75 w/DM who received nephropathy screening or monitoring test done during the last 1 year

% of patients ages 18-85 w/HTN whose last blood pressure (BP) is <140/90 in the last 1 year

PREVENTATIVE CARE



% of women ages 50-74 who received one or more mammograms in the last 2 years

63.45%

GOAL 52%

% of women ages 21-64 who received one or more pap tests to screen for cervical cancer in the last 3 years or women age 30-64 with pap/HPV co testing last 5 years

47.44%

GOAL 48%

% of patients who received one or more screenings for colorectal cancer

43.45%

GOAL 50%

% of patients ages 18+ who were screened for tobacco use and who got tobacco cessation intervention if identified as a tobacco user since Jan 1st

99.05%

GOAL 99%

% of patients ages 18+ who had a BMI taken and if BMI was outside normal parameters received a follow-up plan since Jan 1st

91.94%

GOAL 75%

% patients ages 12 and older who were screened for depression and if positive, had a follow-up plan documented since Jan 1st

48.63%

GOAL 75%

% of patients who received a preventative exam in the last 1 year

36.14%

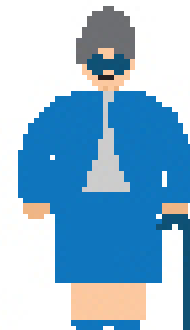
GOAL 50%

% of patients ages 3-6 who had a well child in the last 1 year

86.59%

GOAL 90%

VULNERABLE - ELDERLY



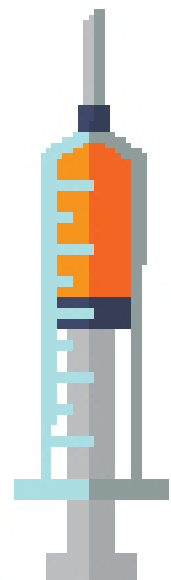
% of patients ages 85-120 whose last blood pressure (BP) is <150/90 in the last 1 year

87.88%

GOAL 81%

PCMH Quality of Care Indicators

IMMUNIZATIONS



% of patients (turning the age of 2) who were fully immunized

16.77%

GOAL: 64%

% of patients (turning the age of 13) who received Tdap, HPV, and meningococcal

4.76%

GOAL: 50%

% of patients (18 and over) who were immunized with Tdap vaccine in the last 10 years

57.38%

GOAL: 50%

CHRONIC DISEASE MANAGEMENT

% of patients ages 18-75, w/DM dx, whose HbA1c < 9% at the time of the last reading in the last year

53.19%

GOAL: 59%

% of patients ages 18-75 w/DM who received a retinal eye exam in the last 1 year

30.04%

GOAL: 68%

% of pts ages 18-75 w/DM who received a foot exam in the last 1 year

54.41%

GOAL: 85%

72.74%

GOAL: 90%

74.66%

GOAL: 81%

% of patients ages 18-75 w/DM who received nephropathy screening or monitoring test done during the last 1 year

% of patients ages 18-85 w/HTN whose last blood pressure (BP) is <140/90 in the last 1 year

PREVENTATIVE CARE



% of women ages 50-74 who received one or more mammograms in the last 2 years

62.65%

GOAL 52%

% of women ages 21-64 who received one or more pap tests to screen for cervical cancer in the last 3 years or women age 30-64 with pap/HPV co testing last 5 years

58.62%

GOAL 48%

% of patients who received one or more screenings for colorectal cancer

33.35%

GOAL 50%

% of patients ages 18+ who were screened for tobacco use and who got tobacco cessation intervention if identified as a tobacco user since Jan 1st

97.38%

GOAL 99%

% of patients ages 18+ who had a BMI taken and if BMI was outside normal parameters received a follow-up plan since Jan 1st

86.67%

GOAL 75%

% patients ages 12 and older who were screened for depression and if positive, had a follow-up plan documented since Jan 1st

47.89%

GOAL 75%

% of patients who received a preventative exam in the last 1 year

11.15%

GOAL 50%

% of patients ages 3-6 who had a well child in the last 1 year

82.12%

GOAL 90%

VULNERABLE - ELDERLY



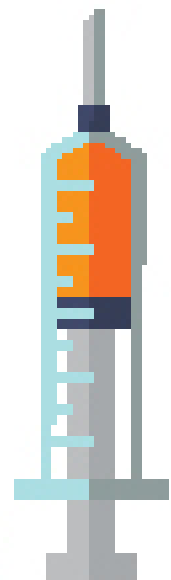
% of patients ages 85-120 whose last blood pressure (BP) is <150/90 in the last 1 year

78.12%

GOAL 81%

PCMH Quality of Care Indicators

IMMUNIZATIONS



% of patients (turning the age of 2) who were fully immunized

2.59%

GOAL: 64%

% of patients (turning the age of 13) who received Tdap, HPV, and meningococcal

7.69%

GOAL: 50%

% of patients (18 and over) who were immunized with Tdap vaccine in the last 10 years

68.74%

GOAL: 50%

CHRONIC DISEASE MANAGEMENT

% of patients ages 18-75, w/DM dx, whose HbA1c < 9% at the time of the last reading in the last year

65.41%

GOAL: 59%

% of patients ages 18-75 w/DM who received a retinal eye exam in the last 1 year

26.15%

GOAL: 68%

% of pts ages 18-75 w/DM who received a foot exam in the last 1 year

56.04%

GOAL: 85%

75.34%

GOAL: 90%

80.76%

GOAL: 81%

% of patients ages 18-75 w/DM who received nephropathy screening or monitoring test done during the last 1 year

% of patients ages 18-85 w/HTN whose last blood pressure (BP) is <140/90 in the last 1 year

PREVENTATIVE CARE



% of women ages 50-74 who received one or more mammograms in the last 2 years

61.9%

GOAL 52%

% of women ages 21-64 who received one or more pap tests to screen for cervical cancer in the last 3 years or women age 30-64 with pap/HPV co testing last 5 years

57.49%

GOAL 48%

% of patients who received one or more screenings for colorectal cancer

42.64%

GOAL 50%

% of patients ages 18+ who were screened for tobacco use and who got tobacco cessation intervention if identified as a tobacco user since Jan 1st

99.74%

GOAL 99%

% of patients ages 18+ who had a BMI taken and if BMI was outside normal parameters received a follow-up plan since Jan 1st

77.56%

GOAL 75%

% patients ages 12 and older who were screened for depression and if positive, had a follow-up plan documented since Jan 1st

49.26%

GOAL 75%

% of patients who received a preventative exam in the last 1 year

25.24%

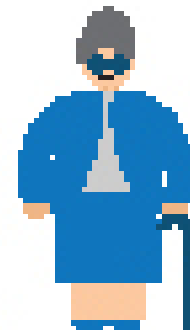
GOAL 50%

% of patients ages 3-6 who had a well child in the last 1 year

87.54%

GOAL 90%

VULNERABLE - ELDERLY



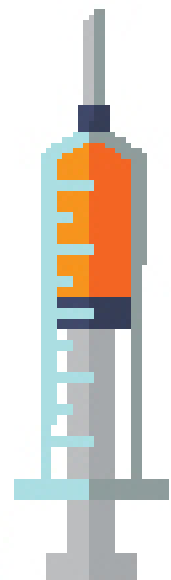
% of patients ages 85-120 whose last blood pressure (BP) is <150/90 in the last 1 year

73.33%

GOAL 81%

PCMH Quality of Care Indicators

IMMUNIZATIONS



% of patients (turning the age of 2) who were fully immunized

6.67%

GOAL: 64%

% of patients (turning the age of 13) who received Tdap, HPV, and meningococcal

4%

GOAL: 50%

% of patients (18 and over) who were immunized with Tdap vaccine in the last 10 years

66.51%

GOAL: 50%

CHRONIC DISEASE MANAGEMENT

% of patients ages 18-75, w/DM dx, whose HbA1c < 9% at the time of the last reading in the last year

69.18%

GOAL: 59%

% of patients ages 18-75 w/DM who received a retinal eye exam in the last 1 year

26.24%

GOAL: 68%

% of pts ages 18-75 w/DM who received a foot exam in the last 1 year

33.33%

GOAL: 85%

65.96%

GOAL: 90%

81.21%

GOAL: 81%

% of patients ages 18-75 w/DM who received nephropathy screening or monitoring test done during the last 1 year

% of patients ages 18-85 w/HTN whose last blood pressure (BP) is <140/90 in the last 1 year

PREVENTATIVE CARE



% of women ages 50-74 who received one or more mammograms in the last 2 years

47.21%

GOAL 52%

% of women ages 21-64 who received one or more pap tests to screen for cervical cancer in the last 3 years or women age 30-64 with pap/HPV co testing last 5 years

45.08%

GOAL 48%

% of patients who received one or more screenings for colorectal cancer

35.91%

GOAL 50%

% of patients ages 18+ who were screened for tobacco use and who got tobacco cessation intervention if identified as a tobacco user since Jan 1st

98.92%

GOAL 99%

% of patients ages 18+ who had a BMI taken and if BMI was outside normal parameters received a follow-up plan since Jan 1st

93%

GOAL 75%

% patients ages 12 and older who were screened for depression and if positive, had a follow-up plan documented since Jan 1st

51.7%

GOAL 75%

% of patients who received a preventative exam in the last 1 year

47.21%

GOAL 50%

% of patients ages 3-6 who had a well child in the last 1 year

83.75%

GOAL 90%

VULNERABLE - ELDERLY



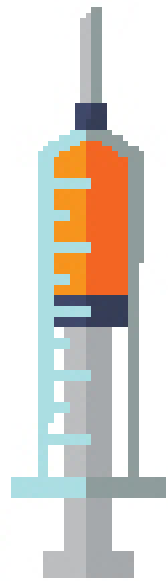
% of patients ages 85-120 whose last blood pressure (BP) is <150/90 in the last 1 year

90%

GOAL 81%

PCMH Quality of Care Indicators

IMMUNIZATIONS



% of patients (18 and over) who were immunized with Tdap vaccine in the last 10 years

84.87%

GOAL: 50%

PREVENTATIVE CARE



% of women ages 50-74 who received one or more mammograms in the last 2 years

70.83%

**GOAL
52%**

% of women ages 21-64 who received one or more pap tests to screen for cervical cancer in the last 3 years or women age 30-64 with pap/HPV co testing last 5 years

65.93%

**GOAL
48%**

% of patients who received one or more screenings for colorectal cancer

62.26%

**GOAL
50%**

% of patients ages 18 + who were screened for tobacco use and who got tobacco cessation intervention if identified as a tobacco user since Jan 1st

100%

**GOAL
99%**

% of patients ages 18+ who had a BMI taken and if BMI was outside normal parameters received a follow-up plan since Jan 1st

83.74%

**GOAL
75%**

% patients ages 12 and older who were screened for depression and if positive, had a follow-up plan documented since Jan 1st

49.16%

**GOAL
75%**

% of patients who received a preventative exam in the last 1 year

14.96%

**GOAL
50%**

% of patients ages 3-6 who had a well child in the last 1 year

100%

**GOAL
90%**

CHRONIC DISEASE MANAGEMENT

% of patients ages 18-75, w/DM dx, whose HbA1c < 9% at the time of the last reading in the last year

73.83%

GOAL: 59%

% of patients ages 18-75 w/DM who received a retinal eye exam in the last 1 year

40.77%

GOAL: 68%

% of pts ages 18-75 w/DM who received a foot exam in the last 1 year

45.64%

GOAL: 85%

61.26%

GOAL: 90%

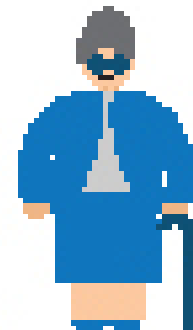
88.75%

GOAL: 81%

% of patients ages 18-75 w/DM who received nephropathy screening or monitoring test done during the last 1 year

% of patients ages 18-85 w/HTN whose last blood pressure (BP) is <140/90 in the last 1 year

VULNERABLE - ELDERLY



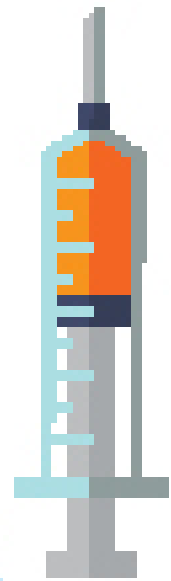
% of patients ages 85-120 whose last blood pressure (BP) is <150/90 in the last 1 year

81.41%

**GOAL
81%**

PCMH Quality of Care Indicators

IMMUNIZATIONS



% of patients (turning the age of 2) who were fully immunized

0%

GOAL: 64%

% of patients (turning the age of 13) who received Tdap, HPV, and meningococcal

0%

GOAL: 50%

% of patients (18 and over) who were immunized with Tdap vaccine in the last 10 years

65.42%

GOAL: 50%

CHRONIC DISEASE MANAGEMENT

% of patients ages 18-75, w/DM dx, whose HbA1c < 9% at the time of the last reading in the last year

57.35%

GOAL: 59%

% of patients ages 18-75 w/DM who received a retinal eye exam in the last 1 year

28.38%

GOAL: 68%

% of pts ages 18-75 w/DM who received a foot exam in the last 1 year

30.27%

GOAL: 85%

53.68%

GOAL: 90%

78.76%

GOAL: 81%

% of patients ages 18-75 w/DM who received nephropathy screening or monitoring test done during the last 1 year

% of patients ages 18-85 w/HTN whose last blood pressure (BP) is <140/90 in the last 1 year

PREVENTATIVE CARE



% of women ages 50-74 who received one or more mammograms in the last 2 years

61.95%

GOAL 52%

% of women ages 21-64 who received one or more pap tests to screen for cervical cancer in the last 3 years or women age 30-64 with pap/HPV co testing last 5 years

52.45%

GOAL 48%

% of patients who received one or more screenings for colorectal cancer

40.75%

GOAL 50%

% of patients ages 18+ who were screened for tobacco use and who got tobacco cessation intervention if identified as a tobacco user since Jan 1st

97.85%

GOAL 99%

% of patients ages 18+ who had a BMI taken and if BMI was outside normal parameters received a follow-up plan since Jan 1st

83.99%

GOAL 75%

% patients ages 12 and older who were screened for depression and if positive, had a follow-up plan documented since Jan 1st

40.04%

GOAL 75%

% of patients who received a preventative exam in the last 1 year

24.68%

GOAL 50%

% of patients ages 3-6 who had a well child in the last 1 year

73.91%

GOAL 90%

VULNERABLE - ELDERLY



% of patients ages 85-120 whose last blood pressure (BP) is <150/90 in the last 1 year

78.65%

GOAL 81%