

PCMH Quality of Care Indicators

IMMUNIZATIONS



% of patients (turning the age of 2) who were fully immunized

0%

GOAL: 64%

% of patients (turning the age of 13) who received Tdap, HPV, and meningococcal

0%

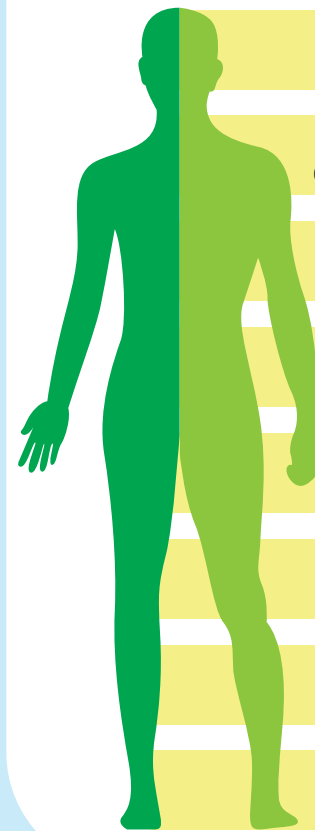
GOAL: 50%

% of patients (18 and over) who were immunized with Tdap vaccine in the last 10 years

34.37%

GOAL: 50%

PREVENTATIVE CARE



% of women ages 50-74 who received one or more mammograms in the last 2 years

54.93%

GOAL 52%

% of women ages 21-64 who received one or more pap tests to screen for cervical cancer in the last 3 years or women age 30-64 with pap/HPV co testing last 5 years

62.7%

GOAL 48%

% of patients who received one or more screenings for colorectal cancer

49.95%

GOAL 50%

% of patients ages 18 + who were screened for tobacco use and who got tobacco cessation intervention if identified as a tobacco user since Jan 1st

97.69%

GOAL 99%

% of patients ages 18+ who had a BMI taken and if BMI was outside normal parameters received a follow-up plan since Jan 1st

98.13%

GOAL 75%

% patients ages 12 and older who were screened for depression and if positive, had a follow-up plan documented since Jan 1st

91.75%

GOAL 75%

% of patients who received a preventative exam in the last 1 year

14.96%

GOAL 50%

% of patients ages 3-6 who had a well child in the last 1 year

92.31%

GOAL 90%

CHRONIC DISEASE MANAGEMENT

% of patients ages 18-75, w/DM dx, whose HbA1c < 9% at the time of the last reading in the last year

67.97%

GOAL: 59%

% of patients ages 18-75 w/DM who received a retinal eye exam in the last 1 year

24.55%

GOAL: 68%

% of pts ages 18-75 w/DM who received a foot exam in the last 1 year

53.94%

GOAL: 85%

63.58%

GOAL: 90%

88.49%

GOAL: 81%

% of patients ages 18-75 w/DM who received nephropathy screening or monitoring test done during the last 1 year

% of patients ages 18-85 w/HTN whose last blood pressure (BP) is <140/90 in the last 1 year

VULNERABLE - ELDERLY



% of patients ages 85-120 whose last blood pressure (BP) is <150/90 in the last 1 year

91.89%

GOAL 81%

PCMH Quality of Care Indicators

IMMUNIZATIONS



% of patients (turning the age of 2) who were fully immunized

30.4%

GOAL: 64%

% of patients (turning the age of 13) who received Tdap, HPV, and meningococcal

8.15%

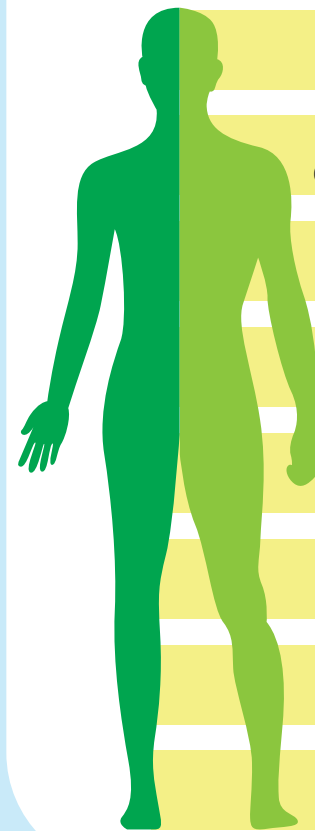
GOAL: 50%

% of patients (18 and over) who were immunized with Tdap vaccine in the last 10 years

57.2%

GOAL: 50%

PREVENTATIVE CARE



% of women ages 50-74 who received one or more mammograms in the last 2 years

61.26%

GOAL 52%

% of women ages 21-64 who received one or more pap tests to screen for cervical cancer in the last 3 years or women age 30-64 with pap/HPV co testing last 5 years

49.71%

GOAL 48%

% of patients who received one or more screenings for colorectal cancer

37.4%

GOAL 50%

% of patients ages 18 + who were screened for tobacco use and who got tobacco cessation intervention if identified as a tobacco user since Jan 1st

91.75%

GOAL 99%

% of patients ages 18+ who had a BMI taken and if BMI was outside normal parameters received a follow-up plan since Jan 1st

88.49%

GOAL 75%

% patients ages 12 and older who were screened for depression and if positive, had a follow-up plan documented since Jan 1st

48.64%

GOAL 75%

% of patients who received a preventative exam in the last 1 year

17.46%

GOAL 50%

% of patients ages 3-6 who had a well child in the last 1 year

75.15%

GOAL 90%

VULNERABLE - ELDERLY



% of patients ages 85-120 whose last blood pressure (BP) is <150/90 in the last 1 year

73.51%

GOAL 81%

CHRONIC DISEASE MANAGEMENT

% of patients ages 18-75, w/DM dx, whose HbA1c < 9% at the time of the last reading in the last year

59.65%

GOAL: 59%

% of patients ages 18-75 w/DM who received a retinal eye exam in the last 1 year

21.22%

GOAL: 68%

% of pts ages 18-75 w/DM who received a foot exam in the last 1 year

36.68%

GOAL: 85%

68.01%

GOAL: 90%

80.55%

GOAL: 81%

% of patients ages 18-75 w/DM who received nephropathy screening or monitoring test done during the last 1 year

% of patients ages 18-85 w/HTN whose last blood pressure (BP) is <140/90 in the last 1 year

PCMH Quality of Care Indicators

IMMUNIZATIONS



% of patients (turning the age of 2) who were fully immunized

30.56%

GOAL: 64%

% of patients (turning the age of 13) who received Tdap, HPV, and meningococcal

7.81%

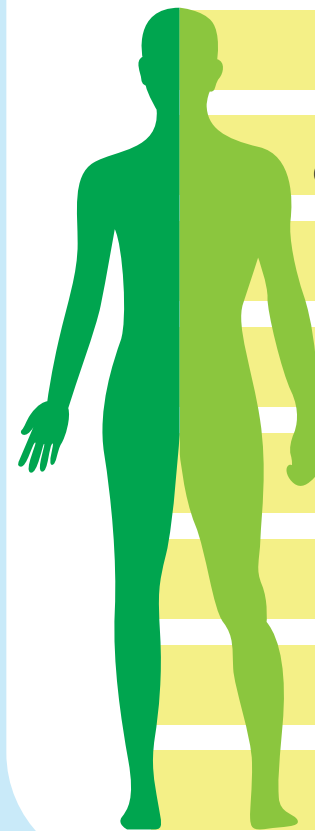
GOAL: 50%

% of patients (18 and over) who were immunized with Tdap vaccine in the last 10 years

66.48%

GOAL: 50%

PREVENTATIVE CARE



% of women ages 50-74 who received one or more mammograms in the last 2 years

54.33%

GOAL 52%

% of women ages 21-64 who received one or more pap tests to screen for cervical cancer in the last 3 years or women age 30-64 with pap/HPV co testing last 5 years

63.59%

GOAL 48%

% of patients who received one or more screenings for colorectal cancer

32.83%

GOAL 50%

% of patients ages 18 + who were screened for tobacco use and who got tobacco cessation intervention if identified as a tobacco user since Jan 1st

96.42%

GOAL 99%

% of patients ages 18+ who had a BMI taken and if BMI was outside normal parameters received a follow-up plan since Jan 1st

90.11%

GOAL 75%

% patients ages 12 and older who were screened for depression and if positive, had a follow-up plan documented since Jan 1st

60.38%

GOAL 75%

% of patients who received a preventative exam in the last 1 year

24.9%

GOAL 50%

% of patients ages 3-6 who had a well child in the last 1 year

87.01%

GOAL 90%

CHRONIC DISEASE MANAGEMENT

% of patients ages 18-75, w/DM dx, whose HbA1c < 9% at the time of the last reading in the last year

56.60%

GOAL: 59%

% of patients ages 18-75 w/DM who received a retinal eye exam in the last 1 year

24.89%

GOAL: 68%

% of pts ages 18-75 w/DM who received a foot exam in the last 1 year

42.70%

GOAL: 85%

59.93%

GOAL: 90%

75.94%

GOAL: 81%

% of patients ages 18-75 w/DM who received nephropathy screening or monitoring test done during the last 1 year

% of patients ages 18-85 w/HTN whose last blood pressure (BP) is <140/90 in the last 1 year

VULNERABLE - ELDERLY



% of patients ages 85-120 whose last blood pressure (BP) is <150/90 in the last 1 year

77.78%

GOAL 81%

PCMH Quality of Care Indicators

IMMUNIZATIONS



% of patients (turning the age of 2) who were fully immunized

37.28%

GOAL: 64%

% of patients (turning the age of 13) who received Tdap, HPV, and meningococcal

5.7%

GOAL: 50%

% of patients (18 and over) who were immunized with Tdap vaccine in the last 10 years

48.81%

GOAL: 50%

CHRONIC DISEASE MANAGEMENT

% of patients ages 18-75, w/DM dx, whose HbA1c < 9% at the time of the last reading in the last year

12.50%

GOAL: 59%

% of patients ages 18-75 w/DM who received a retinal eye exam in the last 1 year

20.00%

GOAL: 68%

% of pts ages 18-75 w/DM who received a foot exam in the last 1 year

0%

GOAL: 85%

30.00%

GOAL: 90%

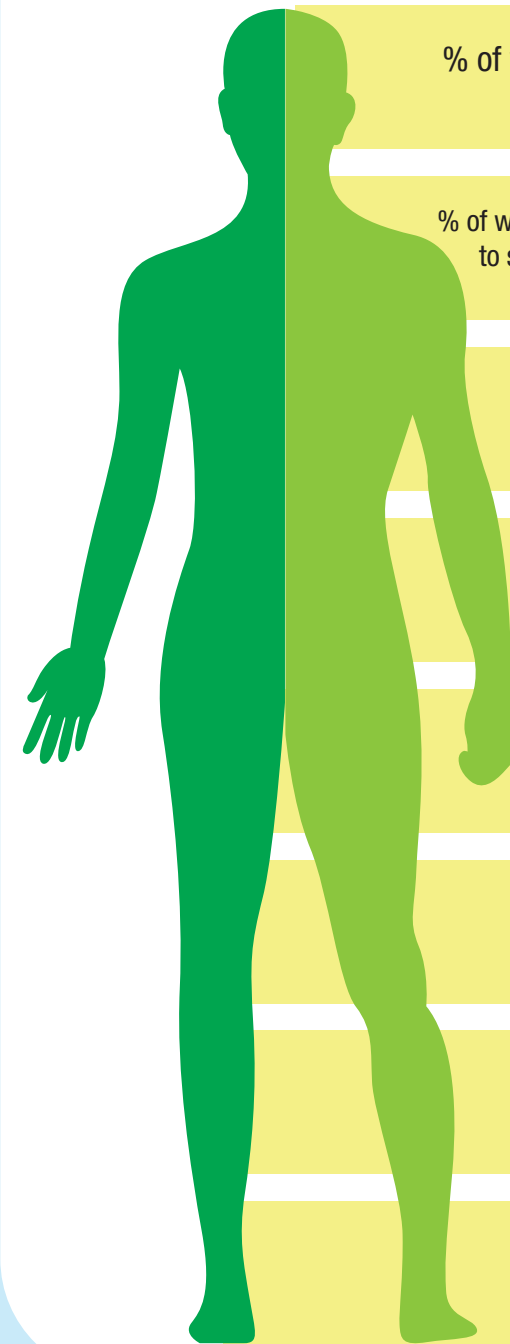
55.81%

GOAL: 81%

% of patients ages 18-75 w/DM who received nephropathy screening or monitoring test done during the last 1 year

% of patients ages 18-85 w/HTN whose last blood pressure (BP) is <140/90 in the last 1 year

PREVENTATIVE CARE



% of women ages 50-74 who received one or more mammograms in the last 2 years

75.89%

GOAL 52%

% of women ages 21-64 who received one or more pap tests to screen for cervical cancer in the last 3 years or women age 30-64 with pap/HPV co testing last 5 years

61.06%

GOAL 48%

% of patients who received one or more screenings for colorectal cancer

0%

GOAL 50%

% of patients ages 18+ who were screened for tobacco use and who got tobacco cessation intervention if identified as a tobacco user since Jan 1st

96.38%

GOAL 99%

% of patients ages 18+ who had a BMI taken and if BMI was outside normal parameters received a follow-up plan since Jan 1st

78.07%

GOAL 75%

% patients ages 12 and older who were screened for depression and if positive, had a follow-up plan documented since Jan 1st

56.84%

GOAL 75%

% of patients who received a preventative exam in the last 1 year

13.76%

GOAL 50%

% of patients ages 3-6 who had a well child in the last 1 year

85.25%

GOAL 90%

PCMH Quality of Care Indicators

IMMUNIZATIONS



% of patients (turning the age of 2) who were fully immunized

45.95%

GOAL: 64%

% of patients (turning the age of 13) who received Tdap, HPV, and meningococcal

21.84%

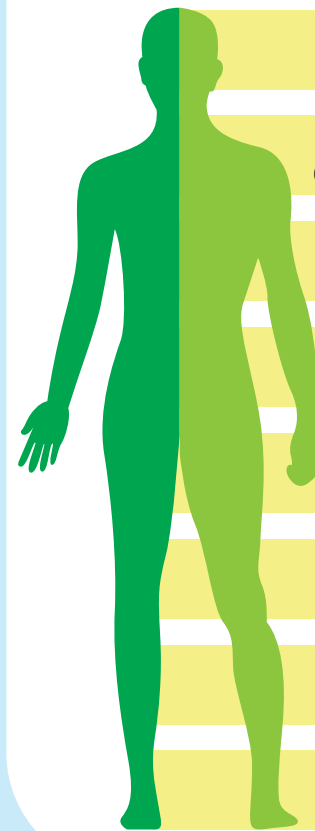
GOAL: 50%

% of patients (18 and over) who were immunized with Tdap vaccine in the last 10 years

68.73%

GOAL: 50%

PREVENTATIVE CARE



% of women ages 50-74 who received one or more mammograms in the last 2 years

68.06%

GOAL 52%

% of women ages 21-64 who received one or more pap tests to screen for cervical cancer in the last 3 years or women age 30-64 with pap/HPV co testing last 5 years

63.44%

GOAL 48%

% of patients who received one or more screenings for colorectal cancer

43.67%

GOAL 50%

% of patients ages 18 + who were screened for tobacco use and who got tobacco cessation intervention if identified as a tobacco user since Jan 1st

96.96%

GOAL 99%

% of patients ages 18+ who had a BMI taken and if BMI was outside normal parameters received a follow-up plan since Jan 1st

89.82%

GOAL 75%

% patients ages 12 and older who were screened for depression and if positive, had a follow-up plan documented since Jan 1st

78.05%

GOAL 75%

% of patients who received a preventative exam in the last 1 year

11.96%

GOAL 50%

% of patients ages 3-6 who had a well child in the last 1 year

89.22%

GOAL 90%

VULNERABLE - ELDERLY



% of patients ages 85-120 whose last blood pressure (BP) is <150/90 in the last 1 year

79.55%

GOAL 81%

CHRONIC DISEASE MANAGEMENT

% of patients ages 18-75, w/DM dx, whose HbA1c < 9% at the time of the last reading in the last year

62.98%

GOAL: 59%

% of patients ages 18-75 w/DM who received a retinal eye exam in the last 1 year

35.63%

GOAL: 68%

% of pts ages 18-75 w/DM who received a foot exam in the last 1 year

50.39%

GOAL: 85%

71.59%

GOAL: 90%

80.60%

GOAL: 81%

% of patients ages 18-75 w/DM who received nephropathy screening or monitoring test done during the last 1 year

% of patients ages 18-85 w/HTN whose last blood pressure (BP) is <140/90 in the last 1 year

PCMH Quality of Care Indicators

IMMUNIZATIONS



% of patients (turning the age of 2) who were fully immunized

28.75%

GOAL: 64%

% of patients (turning the age of 13) who received Tdap, HPV, and meningococcal

11.24%

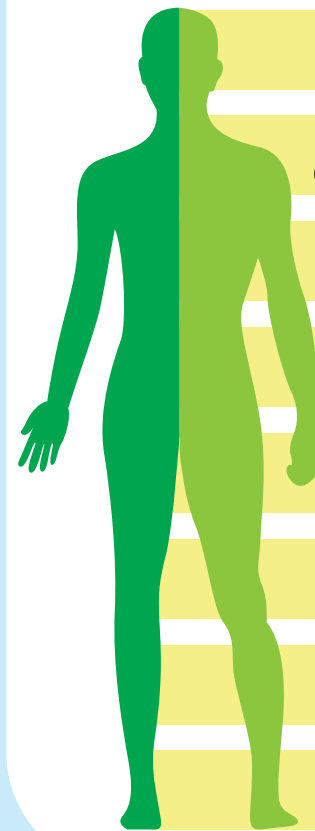
GOAL: 50%

% of patients (18 and over) who were immunized with Tdap vaccine in the last 10 years

65.37%

GOAL: 50%

PREVENTATIVE CARE



% of women ages 50-74 who received one or more mammograms in the last 2 years

71.53% **GOAL 52%**

% of women ages 21-64 who received one or more pap tests to screen for cervical cancer in the last 3 years or women age 30-64 with pap/HPV co testing last 5 years

54.88% **GOAL 48%**

% of patients who received one or more screenings for colorectal cancer

49.55% **GOAL 50%**

% of patients ages 18 + who were screened for tobacco use and who got tobacco cessation intervention if identified as a tobacco user since Jan 1st

97.49% **GOAL 99%**

% of patients ages 18+ who had a BMI taken and if BMI was outside normal parameters received a follow-up plan since Jan 1st

94.8% **GOAL 75%**

% patients ages 12 and older who were screened for depression and if positive, had a follow-up plan documented since Jan 1st

74.69% **GOAL 75%**

% of patients who received a preventative exam in the last 1 year

38.59% **GOAL 50%**

% of patients ages 3-6 who had a well child in the last 1 year

93.36% **GOAL 90%**

CHRONIC DISEASE MANAGEMENT

% of patients ages 18-75, w/DM dx, whose HbA1c < 9% at the time of the last reading in the last year

62.48%
GOAL: 59%

% of patients ages 18-75 w/DM who received a retinal eye exam in the last 1 year

78.76%
GOAL: 90%

% of pts ages 18-75 w/DM who received a foot exam in the last 1 year

47.75%
GOAL: 68%

68.03%
GOAL: 85%

% of patients ages 18-75 w/DM who received nephropathy screening or monitoring test done during the last 1 year

80.00%
GOAL: 81%

% of patients ages 18-85 w/HTN whose last blood pressure (BP) is <140/90 in the last 1 year

VULNERABLE - ELDERLY



% of patients ages 85-120 whose last blood pressure (BP) is <150/90 in the last 1 year

72.22%

GOAL 81%

PCMH Quality of Care Indicators

IMMUNIZATIONS



% of patients (turning the age of 2) who were fully immunized

31.34%

GOAL: 64%

% of patients (turning the age of 13) who received Tdap, HPV, and meningococcal

6.77%

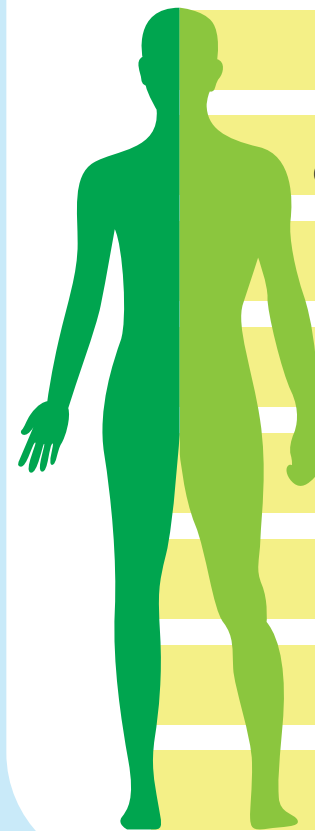
GOAL: 50%

% of patients (18 and over) who were immunized with Tdap vaccine in the last 10 years

59.19%

GOAL: 50%

PREVENTATIVE CARE



% of women ages 50-74 who received one or more mammograms in the last 2 years

66.58%

GOAL 52%

% of women ages 21-64 who received one or more pap tests to screen for cervical cancer in the last 3 years or women age 30-64 with pap/HPV co testing last 5 years

66.99%

GOAL 48%

% of patients who received one or more screenings for colorectal cancer

43.45%

GOAL 50%

% of patients ages 18 + who were screened for tobacco use and who got tobacco cessation intervention if identified as a tobacco user since Jan 1st

95.51%

GOAL 99%

% of patients ages 18+ who had a BMI taken and if BMI was outside normal parameters received a follow-up plan since Jan 1st

93.09%

GOAL 75%

% patients ages 12 and older who were screened for depression and if positive, had a follow-up plan documented since Jan 1st

68.29%

GOAL 75%

% of patients who received a preventative exam in the last 1 year

14.42%

GOAL 50%

% of patients ages 3-6 who had a well child in the last 1 year

84.31%

GOAL 90%

CHRONIC DISEASE MANAGEMENT

% of patients ages 18-75, w/DM dx, whose HbA1c < 9% at the time of the last reading in the last year

53.75%

GOAL: 59%

% of patients ages 18-75 w/DM who received a retinal eye exam in the last 1 year

32.20%

GOAL: 68%

% of pts ages 18-75 w/DM who received a foot exam in the last 1 year

62.98%

GOAL: 85%

72.97%

GOAL: 90%

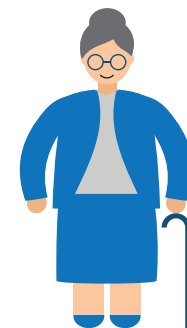
75.86%

GOAL: 81%

% of patients ages 18-75 w/DM who received nephropathy screening or monitoring test done during the last 1 year

% of patients ages 18-85 w/HTN whose last blood pressure (BP) is <140/90 in the last 1 year

VULNERABLE - ELDERLY



% of patients ages 85-120 whose last blood pressure (BP) is <150/90 in the last 1 year

72.97%

GOAL 81%

PCMH Quality of Care Indicators

IMMUNIZATIONS



% of patients (turning the age of 2) who were fully immunized

31.86%

GOAL: 64%

% of patients (turning the age of 13) who received Tdap, HPV, and meningococcal

9.52%

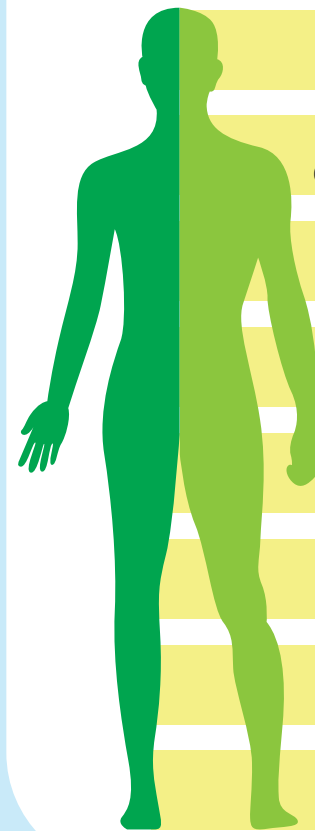
GOAL: 50%

% of patients (18 and over) who were immunized with Tdap vaccine in the last 10 years

67.9%

GOAL: 50%

PREVENTATIVE CARE



% of women ages 50-74 who received one or more mammograms in the last 2 years

65.48%

GOAL 52%

% of women ages 21-64 who received one or more pap tests to screen for cervical cancer in the last 3 years or women age 30-64 with pap/HPV co testing last 5 years

61.64%

GOAL 48%

% of patients who received one or more screenings for colorectal cancer

43.8%

GOAL 50%

% of patients ages 18 + who were screened for tobacco use and who got tobacco cessation intervention if identified as a tobacco user since Jan 1st

97.64%

GOAL 99%

% of patients ages 18+ who had a BMI taken and if BMI was outside normal parameters received a follow-up plan since Jan 1st

90.55%

GOAL 75%

% patients ages 12 and older who were screened for depression and if positive, had a follow-up plan documented since Jan 1st

82.25%

GOAL 75%

% of patients who received a preventative exam in the last 1 year

27.47%

GOAL 50%

% of patients ages 3-6 who had a well child in the last 1 year

81.65%

GOAL 90%

CHRONIC DISEASE MANAGEMENT

% of patients ages 18-75, w/DM dx, whose HbA1c < 9% at the time of the last reading in the last year

67.34%

GOAL: 59%

% of patients ages 18-75 w/DM who received a retinal eye exam in the last 1 year

20.73%

GOAL: 68%

% of pts ages 18-75 w/DM who received a foot exam in the last 1 year

55.49%

GOAL: 85%

78.71%

GOAL: 90%

82.25%

GOAL: 81%

% of patients ages 18-75 w/DM who received nephropathy screening or monitoring test done during the last 1 year

% of patients ages 18-85 w/HTN whose last blood pressure (BP) is <140/90 in the last 1 year

VULNERABLE - ELDERLY



% of patients ages 85-120 whose last blood pressure (BP) is <150/90 in the last 1 year

78%

GOAL 81%

PCMH Quality of Care Indicators

IMMUNIZATIONS



% of patients (turning the age of 2) who were fully immunized

14.81%

GOAL: 64%

% of patients (turning the age of 13) who received Tdap, HPV, and meningococcal

3.57%

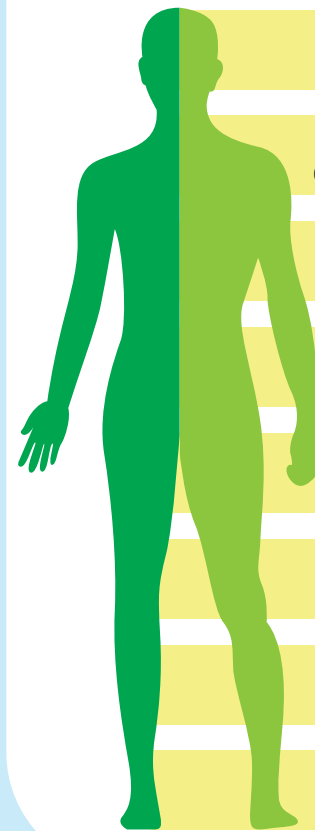
GOAL: 50%

% of patients (18 and over) who were immunized with Tdap vaccine in the last 10 years

63.51%

GOAL: 50%

PREVENTATIVE CARE



% of women ages 50-74 who received one or more mammograms in the last 2 years

61.49%

GOAL 52%

% of women ages 21-64 who received one or more pap tests to screen for cervical cancer in the last 3 years or women age 30-64 with pap/HPV co testing last 5 years

55.21%

GOAL 48%

% of patients who received one or more screenings for colorectal cancer

43.64%

GOAL 50%

% of patients ages 18 + who were screened for tobacco use and who got tobacco cessation intervention if identified as a tobacco user since Jan 1st

95.4%

GOAL 99%

% of patients ages 18+ who had a BMI taken and if BMI was outside normal parameters received a follow-up plan since Jan 1st

94.54%

GOAL 75%

% patients ages 12 and older who were screened for depression and if positive, had a follow-up plan documented since Jan 1st

73.42%

GOAL 75%

% of patients who received a preventative exam in the last 1 year

43.08%

GOAL 50%

% of patients ages 3-6 who had a well child in the last 1 year

83.78%

GOAL 90%

VULNERABLE - ELDERLY



% of patients ages 85-120 whose last blood pressure (BP) is <150/90 in the last 1 year

61.54%

GOAL 81%

CHRONIC DISEASE MANAGEMENT

% of patients ages 18-75, w/DM dx, whose HbA1c < 9% at the time of the last reading in the last year

63.40%

GOAL: 59%

% of patients ages 18-75 w/DM who received a retinal eye exam in the last 1 year

30.54%

GOAL: 68%

% of pts ages 18-75 w/DM who received a foot exam in the last 1 year

70.44%

GOAL: 85%

83.42%

GOAL: 90%

70.67%

GOAL: 81%

% of patients ages 18-75 w/DM who received nephropathy screening or monitoring test done during the last 1 year

% of patients ages 18-85 w/HTN whose last blood pressure (BP) is <140/90 in the last 1 year

PCMH Quality of Care Indicators

IMMUNIZATIONS



% of patients (18 and over) who were immunized with Tdap vaccine in the last 10 years

86.3%

GOAL: 50%

CHRONIC DISEASE MANAGEMENT

% of patients ages 18-75, w/DM dx, whose HbA1c < 9% at the time of the last reading in the last year

74.20%

GOAL: 59%

% of patients ages 18-75 w/DM who received a retinal eye exam in the last 1 year

55.70%

GOAL: 68%

% of pts ages 18-75 w/DM who received a foot exam in the last 1 year

72.05%

GOAL: 85%

78.20%

GOAL: 90%

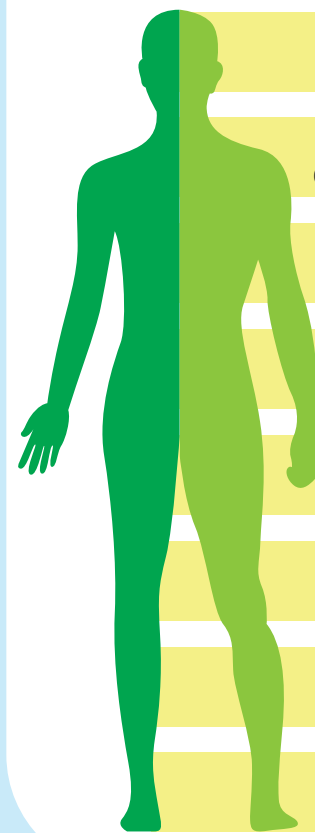
88.38%

GOAL: 81%

% of patients ages 18-75 w/DM who received nephropathy screening or monitoring test done during the last 1 year

% of patients ages 18-85 w/HTN whose last blood pressure (BP) is <140/90 in the last 1 year

PREVENTATIVE CARE



% of women ages 50-74 who received one or more mammograms in the last 2 years

74.1%

GOAL 52%

% of women ages 21-64 who received one or more pap tests to screen for cervical cancer in the last 3 years or women age 30-64 with pap/HPV co testing last 5 years

69.09%

GOAL 48%

% of patients who received one or more screenings for colorectal cancer

66.94%

GOAL 50%

% of patients ages 18 + who were screened for tobacco use and who got tobacco cessation intervention if identified as a tobacco user since Jan 1st

98.32%

GOAL 99%

% of patients ages 18+ who had a BMI taken and if BMI was outside normal parameters received a follow-up plan since Jan 1st

97.3%

GOAL 75%

% patients ages 12 and older who were screened for depression and if positive, had a follow-up plan documented since Jan 1st

92.48%

GOAL 75%

% of patients who received a preventative exam in the last 1 year

14.18%

GOAL 50%

% of patients ages 3-6 who had a well child in the last 1 year

N/A

GOAL 90%

VULNERABLE - ELDERLY



% of patients ages 85-120 whose last blood pressure (BP) is <150/90 in the last 1 year

81.22%

GOAL 81%

PCMH Quality of Care Indicators

IMMUNIZATIONS



% of patients (turning the age of 2) who were fully immunized

0%

GOAL: 64%

% of patients (turning the age of 13) who received Tdap, HPV, and meningococcal

0%

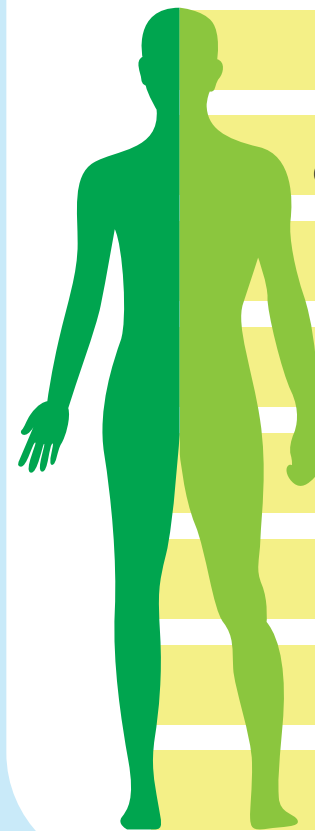
GOAL: 50%

% of patients (18 and over) who were immunized with Tdap vaccine in the last 10 years

68.21%

GOAL: 50%

PREVENTATIVE CARE



% of women ages 50-74 who received one or more mammograms in the last 2 years

64.54%

GOAL 52%

% of women ages 21-64 who received one or more pap tests to screen for cervical cancer in the last 3 years or women age 30-64 with pap/HPV co testing last 5 years

56.82%

GOAL 48%

% of patients who received one or more screenings for colorectal cancer

42.58%

GOAL 50%

% of patients ages 18 + who were screened for tobacco use and who got tobacco cessation intervention if identified as a tobacco user since Jan 1st

95.97%

GOAL 99%

% of patients ages 18+ who had a BMI taken and if BMI was outside normal parameters received a follow-up plan since Jan 1st

90.17%

GOAL 75%

% patients ages 12 and older who were screened for depression and if positive, had a follow-up plan documented since Jan 1st

67.79%

GOAL 75%

% of patients who received a preventative exam in the last 1 year

24.68%

GOAL 50%

% of patients ages 3-6 who had a well child in the last 1 year

78.57%

GOAL 90%

VULNERABLE - ELDERLY



% of patients ages 85-120 whose last blood pressure (BP) is <150/90 in the last 1 year

75.11%

GOAL 81%

CHRONIC DISEASE MANAGEMENT

% of patients ages 18-75, w/DM dx, whose HbA1c < 9% at the time of the last reading in the last year

59.56%

GOAL: 59%

% of patients ages 18-75 w/DM who received a retinal eye exam in the last 1 year

31.78%

GOAL: 68%

% of pts ages 18-75 w/DM who received a foot exam in the last 1 year

47.43%

GOAL: 85%

63.63%

GOAL: 90%

78.76%

GOAL: 81%

% of patients ages 18-75 w/DM who received nephropathy screening or monitoring test done during the last 1 year

% of patients ages 18-85 w/HTN whose last blood pressure (BP) is <140/90 in the last 1 year